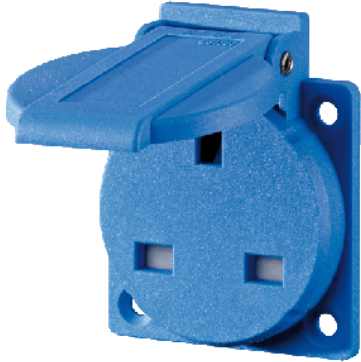
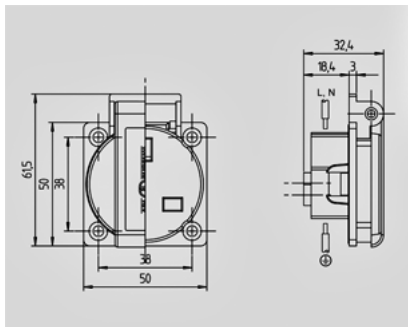


Grounding-type panel mounted receptacle - Part no. 10718

- British standard
- with hinged lid
- 3 screw terminals
- with seal
- receptacle cannot be combined with enclosure base part no. 10714, 10715 or 10716

Technical information

Ampere	13 A
Poles	2 p+E
Voltage	230V
Shutter	yes
Connection technology	Screw terminals
Contact	standard
Protection type	IP 44

Drawing
1 MB 584

Dim. in mm